

[Subscribe](#)[Past Issues](#)[Translate](#)

EWA news 2018

[View this in your browser](#)

EDWARD WILLIAMS ARCHITECTS

A library in Lithuania

Edward Williams Architects has designed a new municipal library for Klaipeda, a city in Lithuania. The new public library will be located in the southern part of the city, an area with high population density and lacking public spaces for the community. The new Library will be an iconic public building and provide space for the community to gather.

In contrast to the massive Soviet apartment buildings, we proposed a transparent building, and circular form that makes a strong statement within the otherwise repetitive, perpendicular urban fabric. Our design positions the functional spaces around the perimeter of the library, so that visitors approaching from all directions see the activities taking place inside. This leaves flexible spaces at the core of the building for group activities.

Read more and view project images [here](#).



Library rendered view

Bespoke designed outdoor furniture range “Loggia”

Edward Williams Architects has just completed its first furniture range which combines the elegance of Mediterranean living with beautiful materials and workmanship.

Made by a local metalworker this bespoke furniture is engineered to be immovable but no larger than necessary, with slim elegant supports and spray painted a subtle dark grey. Tables are topped with magnificent single grey-veined white Carrara marble surfaces: elegant yet durable. A single thick marble sheet is also installed at the base of the sofas to match the table tops.

Edward and Laura, the practice Directors, were first inspired to bring their designs to life when renovating Laura’s family home near Genova. They saw the covered outdoor space, or ‘loggia’, as an opportunity to extend the open plan living room outdoors. When the furniture was installed in the loggia, the range found a fitting name!

Read more and view project images [here](#).



View of the bespoke outdoor "Loggia" sofas

The Midland Metropolitan Hospital bridges are going up!

Activity picked up on site in early November as works continue on site and the steel structure of the Winter Garden is raised.

The assembly of the Winter Garden's prefabricated structure restarted at the beginning of November. After months sitting on site ready to be assembled, the public bridges, which will connect the two lift cores, are finally being installed. With a span of more than 30 metres, and connecting at 6th floor level and above, these bridges will link the three ward "fingers", crossing the open atrium of the Winter Garden with views over Smethwick towards Birmingham.

Read more and view images [here](#).



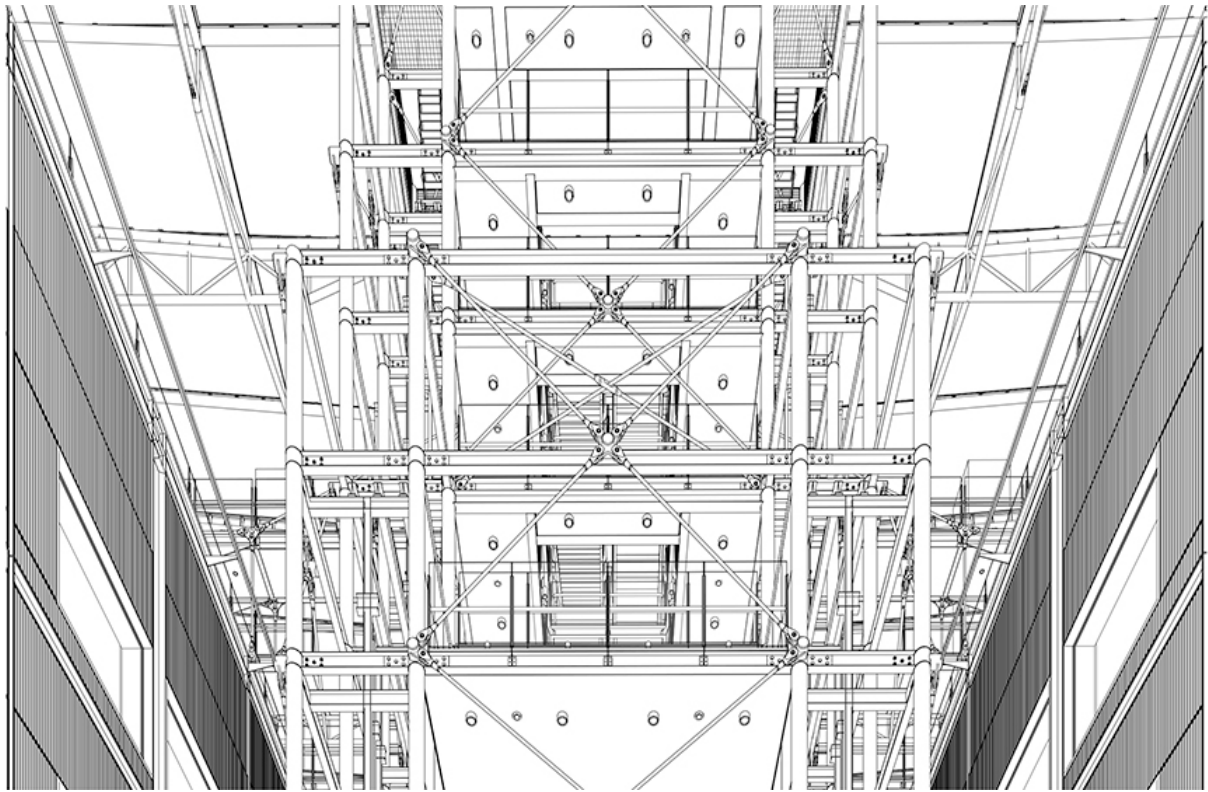
View of the winter garden with bridge structure being elevated in place

Sketch of the week on Building Magazine

Building magazine published a sketch is by one of our architects Pablo Fernandez Villoch, of the central Winter Garden core at the Midland Metropolitan Hospital.

Pablo said: "This drawing shows the dramatic public stair core structures that will support the soaring space of the Winter Garden in the Midland Metropolitan hospital....."

To see the original published article and to read more please link [here](#).



Detail of the published drawing

New People at Edward Williams Architects!

Marta Zapparoli and Oriol Anglada I Carbonell joined our team this month. Marta from Italy is the Directors' new PA and Oriol is an architect from Catalunya, in Spain. They both went through a tough selection process and we are thrilled to have them joining our team.



Marta Zapparoli, our new PA and Oriol Anglada I Carbonell, Architect



EDWARD WILLIAMS ARCHITECTS

Newcombe House, 45 Notting Hill Gate,
London, W11 3LQ, UK
+44 20 7985 0540

enquiries@edwardwilliamsarchitects.com
www.edwardwilliamsarchitects.com

[Unsubscribe](#)

Copyright © 2018 Edward Williams Architects, All rights reserved.

This email was sent to <<Email Address>>

[why did I get this?](#) [unsubscribe from this list](#) [update subscription preferences](#)

Edward Williams Architects · Newcombe House · 45 Notting Hill Gate · London, W11 3LQ · United Kingdom

